



UMZIMVUBU

LOCAL MUNICIPALITY

Person dealing with this matter: Mr. Lwana

Date: 05 MARCH 2014

Request for Quotation

The Umzimvubu Local Municipality invites interested service providers to provide us with quotations **TO CONSTRUCT 9M GATE HOUSE IN MT FRERE LIBRARY AS PER THE SPECIFICATION.**

PREFERENTIAL PROCUREMENT POLICY FRAMEWORK ACT OF 2011 WILL APPLY AS FOLLOWS:

PRICE : 80

BBB-EE : 20

Closing Date for submissions is 13/03/2014 @12:00.

For any enquiries & specification, please contact Supply Chain Management Office @ tell: 039 255 8555.

NB: NO QUOTATION(S) WILL BE CONSIDERED FROM PERSON(S) IN THE SERVICE OF THE STATE. AND SUBMISSION ARE TO BE MADE AT SCM OFFICE, BBBEE VERIFICATION CERTIFICATE MUST BE ATTACHED AND A VALID TAX CLEARANCE CERTIFICATE. FURTHER MORE, NO QUOTATION(S) WILL BE CONSIDERED FROM COMPAN(Y)IES NOT REGISTERED IN THE ULM SUPPLIER DATABASE.



Mr. GPT Nota

Municipal Manager

813 Main Street, Mount Frere
P/Bag 9020, Mt Frere, 5090
T. 039 255 0166| F. 039 255 0167
www.umzimvubu.gov.za

UPHULISO KUMNTU WONKE





UMZIMVUBU
LOCAL MUNICIPALITY

MEMORANDUM

PERSON DEALING WITH THE MATTER: MR. A.N. MANDLANA

To : Budget and Treasury
From : Manager: Citizen and Community Services
Date : 11 February 2014
Subject : Request for Mount Frere Library – Gate House
Vote : 208:700042

The above mentioned matter bears reference

This communique serves as a request for construction of 9m² of gate house in Mount Frere library.

Specification

- See the attached drawing and specification/ bill of quantities.

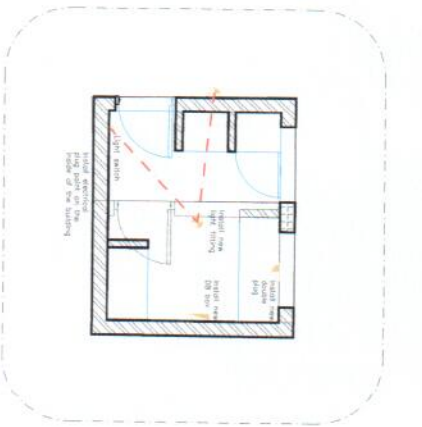
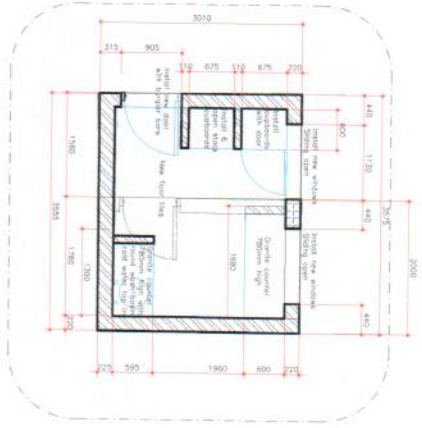
Hope you will find the above in order.

Yours in service delivery



MR. M.N. SINEKE

MANAGER: CITIZEN AND COMMUNITY SERVICES



GENERAL NOTES:-

- All work to be in accordance with the National Building Regulations Act (1975) and amendments thereto.
- Architect's drawings to be used in conjunction with the structural engineer, electrical engineer's and plumbing contractor's drawings where specified.
- Plumbing and electrical drawings to be checked and approved by the respective professional engineers.
- Water reticulation to be in accordance with Part G of SABS 0400.
- Sanitary reticulation to be in accordance with Part H of SABS 0400.
- Structural work: Refer to structural engineers drawings and specifications.
- Approved materials to be used throughout. Refer to the architect's specifications for details.
- Colour: In accordance with Part H of SABS 0400, SABS 0117 and SABS 0120.

GLAZING NOTES

- 2-12mm safety glass
- 1-6mm safety glass

THRESHOLD NOTES

- All floor doors to have a security glass (minimum 10), all floor doors remaining in the open position on the structure.

BUILDING MATERIALS

- Clear House: 60%

NOTE:

Parabolic Storage
Parabolic Storage: Storage where required

Paint
Interior walls - Primed, gild sand. Dimensions to match to new exterior cement plaster.
Substrate to be sound, clean and have a moisture content of not more than 12% (6% for masonry walls) and not more than 10% for other materials etc.
Primer with one coat of GPT water based primer, finish with 2 coats of Dimensional Colours coating over primer.
Between colour coating and primer to be approved by the landscape architect, 100% per line.

Exterior/standard distressed wall - Primed, gild sand
Emulsion to new exterior cement plaster.
Schedule to be sound, clean and have a moisture content of not more than 12% (6% for masonry walls) and not more than 10% for other materials etc. Finish with 2 coats of GPT water based primer, finish with 2 coats of Dimensional Colours coating over primer.
Between colour coating and primer to be approved by the landscape architect, 100% per line.

Plaster on the interior walls - Cement Plaster
Colour II plaster, earthy colour (to be approved by the landscape architect), smooth finish, 15 or 20mm thick to SABS EMV 413-1, 100% MC, 12.5% or 22.5%.

Plaster on the exterior walls - Cement Plaster
Colour II plaster, earthy colour (to be approved by the landscape architect), smooth finish, 15 or 20mm thick to SABS EMV 413-1, 100% MC, 12.5% or 22.5%.

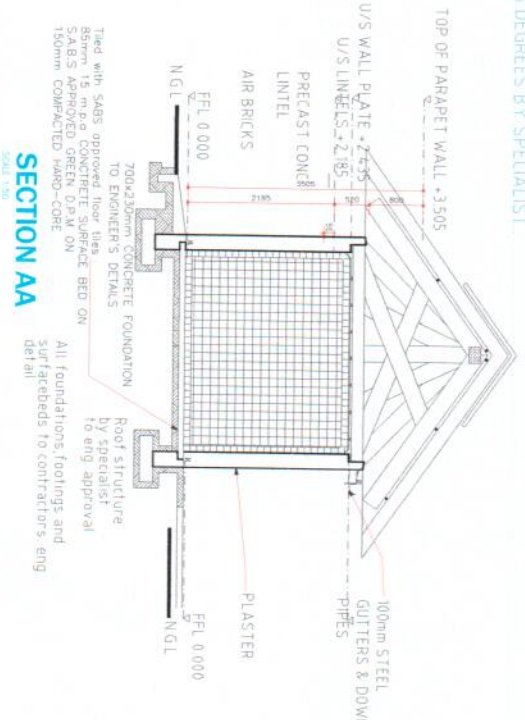
Plaster on the exterior walls - The plaster surface
The plaster surface to be finished with a textured finish (to be approved by the landscape architect).
Coating approximately 5mm thick applied by trowel, brush, comb or other hand made devices.

ELECTRICAL LEGEND

SYMBOL	DESCRIPTION
[Symbol]	220 VOLT CONTACT INDICATED LIGHT
[Symbol]	100V CONTACT INDICATED LIGHT
[Symbol]	220 VOLT DOUBLE FLUO
[Symbol]	100 VOLT SWITCH
[Symbol]	UPPER/LOWER SWITCH
[Symbol]	100V CONTACT INDICATED LIGHT
[Symbol]	220 VOLT CONTACT INDICATED LIGHT

Note: All plans to be approved by contractors own engineer

Copyright. It is noted in this document and no part of this document may be reproduced, stored in a retrieval system or transmitted in any form or by any means, electronic, mechanical, photocopying, recording, or by any information storage and retrieval system, without the prior written permission of the copyright owner.



**GATE HOUSE
DETAIL SCALE 1:50**

Mount Frere Library - Gate House

3.1 Mulholland Street
Gate House

PROJECT
Construction of gatehouse at Mt Frere Library

DESCRIPTION
Gate House

ARCHITECT
Red Landscape Architecture (Pty) Ltd

DATE
1998

SCALE
1:50

PROJECT NO.
1998/001

CLIENT
Mt Frere Library

LOCATION
3.1 Mulholland Street, Gate House

DATE OF ISSUE
1998

DATE OF REVISION
1998

DATE OF CANCELLATION
1998

DATE OF WITHDRAWAL
1998

DATE OF RECALL
1998

DATE OF REVISION
1998

DATE OF CANCELLATION
1998

DATE OF WITHDRAWAL
1998