



**UMZIMVUBU**  
LOCAL MUNICIPALITY

# Visitors Guide

**Mount Frere • Mount Ayliff**



# TABLE OF CONTENTS



<b>Mayor Welcoming</b>	<b>2</b>	<b>Information</b>	<b>6-7</b>
<b>Outline</b>	<b>3</b>	<b>Upcoming Projects</b>	<b>8</b>
<b>Topography</b>	<b>4</b>	<b>King Madzikane Memorial</b>	<b>9</b>
<b>Map</b>	<b>5</b>	<b>Ntsizwa Monument</b>	<b>10</b>



<b>Umzimvubu River</b>	<b>11</b>	<b>Hiking</b>	<b>16</b>
<b>Lugelweni Water Falls</b>	<b>12</b>	<b>Nowekwe Mountain &amp; Tina River</b>	<b>17</b>
<b>Ntenetyana Dam</b>	<b>13</b>	<b>Culture</b>	<b>18</b>
<b>Ntsizwa Mountain</b>	<b>14</b>	<b>Food</b>	<b>19</b>
<b>Ingeli Mountain</b>	<b>15</b>	<b>Religion</b>	<b>20</b>



<b>Amabhaca Craft Centre</b>	<b>21</b>
<b>Msukeni Community Centre</b>	<b>22</b>
<b>Xesibe Tourism Centre</b>	<b>23</b>
<b>Sixvillage Community Centre</b>	<b>24</b>



<b>Afrizona Guest House</b>	<b>25</b>	<b>Eyethu B&amp;B</b>	<b>30</b>	<b>Mount Ayliff Hotel</b>	<b>35</b>
<b>Amafana Guest House</b>	<b>26</b>	<b>Indwe B&amp;B</b>	<b>31</b>	<b>Mount Frere Guest House</b>	<b>36</b>
<b>BCN Makaula Hotel</b>	<b>27</b>	<b>Ilitha Guest House</b>	<b>32</b>	<b>2nd World B&amp;B</b>	<b>37</b>
<b>Denipel Lodge</b>	<b>28</b>	<b>N2 Imvelo Guest House</b>	<b>33</b>	<b>Tapi River Lodge</b>	<b>38</b>
<b>Endulini Guest House</b>	<b>29</b>	<b>Lisomma Lodge</b>	<b>34</b>	<b>Tatenda B&amp;B</b>	<b>39</b>



<b>SAPS</b>	<b>40</b>	<b>Filling Station</b>	<b>46</b>	<b>Hair &amp; Nail Salons</b>	<b>51</b>
<b>EMS &amp; Fire Rescue</b>	<b>41</b>	<b>Community Radio &amp;</b>	<b>47</b>	<b>Banks</b>	<b>52-53</b>
<b>Hospitals</b>	<b>42</b>	<b>Post Office</b>		<b>Fashion &amp; Design</b>	<b>54-55</b>
<b>Surgery</b>	<b>43</b>	<b>Liquor Stores</b>	<b>48</b>	<b>Cab &amp; Hacking</b>	<b>56</b>
<b>Pharmacies</b>	<b>44</b>	<b>Supermarkets</b>	<b>49</b>		
<b>Fitness &amp; Recreation</b>	<b>45</b>	<b>Restaurants</b>	<b>50</b>		



# Mayor Welcomes You



**This is the 4th year the municipality has been developing tourism brochure without fail. This brochure acts as a tool to guide our tourists on tourism products that we offer. I believe that our unique tourist attractions showcased within this brochure and warm hospitality will make you to stay more. We remain committed to promoting and defending our cultural diversity through various means and ways**

**We are waiting to welcome you soon!**

**You are welcome to contact me or anyone of our competent staff if you need more information**

**K.S. Phangwa  
Mayor**

# Outline

Umzimvubu Local Municipality (ULM) is one of the two (2) local municipalities that form the Alfred Nzo District Municipality (ANDM) in the Eastern Cape Province and has a total population of 220 636 residents, of which only 4% live in urban areas while the rest of the population is rural. The municipality borders Matatiele, Mhlontlo, Ntabankulu, Mbizana and Elundini local municipalities as well as Greater Kokstad. Umzimvubu LM consists of Mount Frere and Mount Ayliff. The municipality has identified tourism as one of the pillars for local economic development.



Umzimvubu Local Municipality falls within the Alfred Nzo District of the Eastern Cape Province. The Municipal area comprises an area of 2506 square kilometres. The Municipality has undergone a number of amendments in terms of municipal and ward demarcation which has a profound impact on planning in the area. The Municipality is predominantly rural and the majority of the population reside in rural areas. The majority of land is covered by dispersed low-density traditional settlements, with the exception of some areas around the two urban centres - namely Mount Ayliff (Maxesibe) and Mount Frere (Kwa Bhaca). There has been a significant migration towards the towns over the past few years, which is attributable to a preference by residents to live close to transport routes and urban centres. The Umzimvubu area relies mainly on its history and cultural heritage. The AmaBhaca, amaMpondo, AmaHlubi and in some case Sotho's are some of a handful of nations which can be found in pockets situated within the Umzimvubu municipal area.

Umzimvubu is a buzzing nucleus which cuts directly into the heart of legacy, wealth of historical land marks, entertainment, cultures and plentiful mountains. Umzimvubu is a prime destination for those who seek sight with a treasury heritage and historical battle sites..





# Topography

## Mount frere

### Coordinates

UTM : PF87

Geographical coordinates in decimal degrees (WGS84)

Latitude : -30.917

Longitude : 28.983

Geographical coordinates in degrees minutes seconds (WGS84)

Latitude : -30 55' 00"

Longitude : 28 59' 00"

Places near Mount frere

Bhibha - Gala - Kumahamane - Kupapana - Kusosiba

Kwadungu - Lubacweni - Magqagqeni - Magxeni

Mbodleni - Mdeni - Mnambithi - Moyeni - Mthonjeni

Mtshazi –

## Mount Ayliff

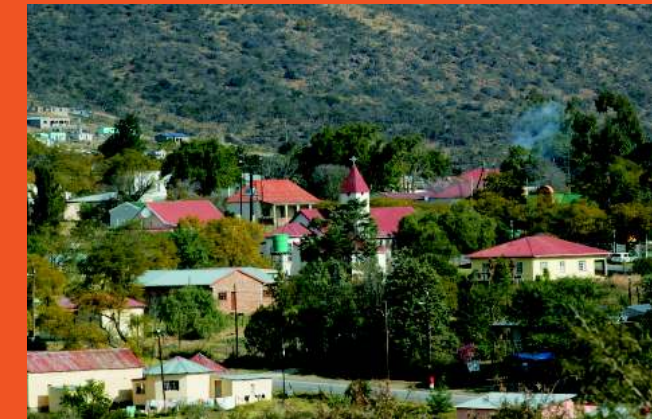
### Coordinates

UTM : QF29

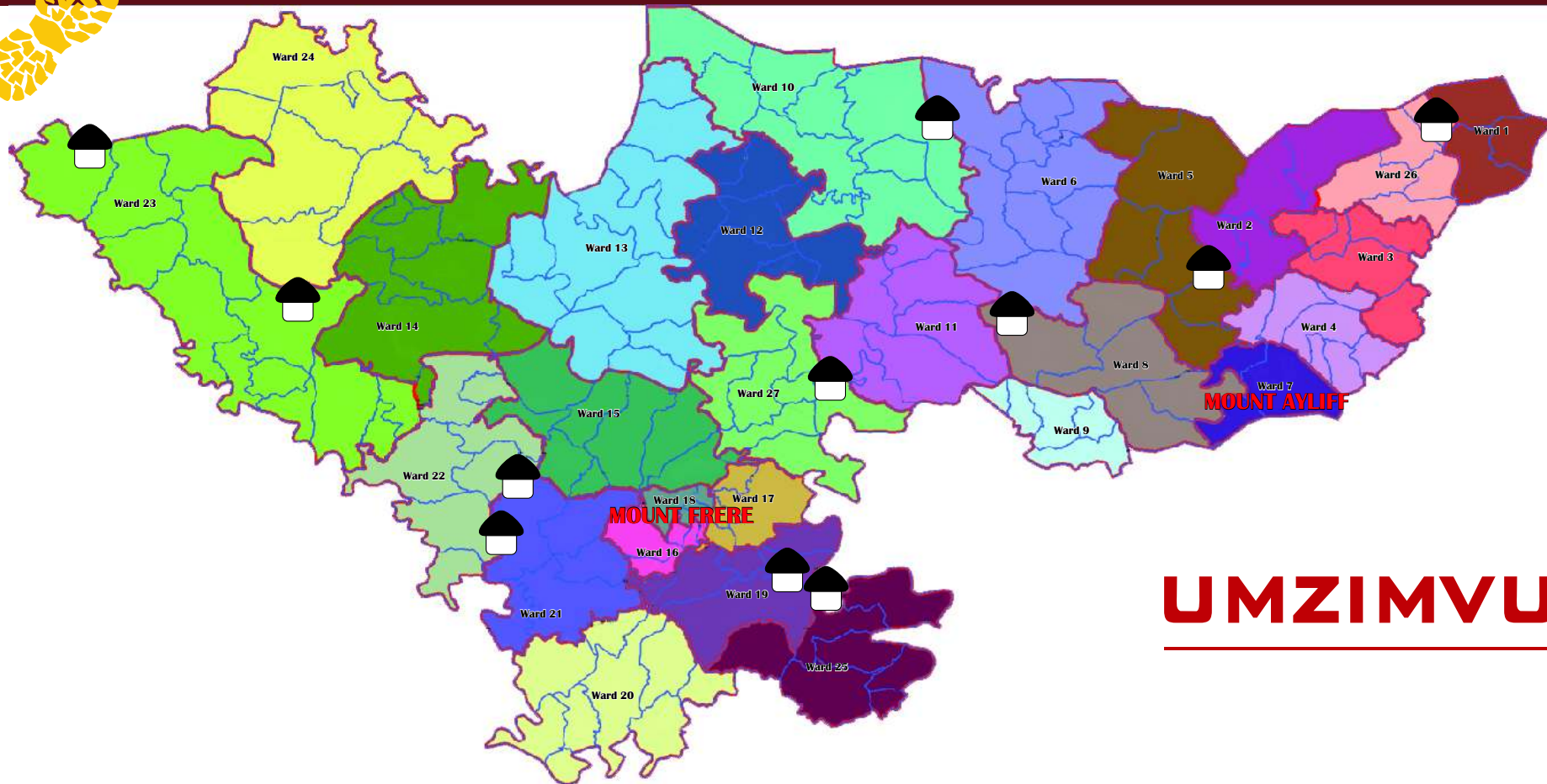
Geographical coordinates in decimal degrees (WGS84)

Latitude : -30.800

Longitude : 29.367



# Map



**UMZIMVUBU**

## Distance

38 km from Kokstad to Mount Ayliff  
80km from Kokstad to Mount Frere  
96 km from Mthatha to Mount Frere  
143 km from Mthatha to Mount Ayliff



**UMZIMVUBU**  
LOCAL MUNICIPALITY



# Information

## N2 Road Construction-Kokstad To Mthatha

The N2 is a major national artery and has to remain fully operational and maintained at all times to ensure that all people drive safely and enjoy travelling without worrying about bad roads. The road is under construction and the project was awarded by the South African National Road Agency Limited (SANRAL) in September 2011. This is a project to rehabilitate a 31 kilometre section of the road from Brookes Nek to the Ngqweleni River, between Kokstad and Umtata. Unfortunately there are stop/go's, these stop/go swill be in place until the project is completed in 2014.

In addition to the rehabilitation of the national road, the contract includes the provision of 22 kilometres of climbing lanes in various sections, the improvement of several major intersections, maintenance work on several small bridges and culverts, the building of walkways in the vicinity of schools and the building of an access road to a village. An appeal is made to all motorists to respond to these road disruptions with patience and to drive safely at all times. For the duration of the project they will need to factor the delays into their travelling time. When the project is complete the road will be immensely improved to the benefit of everyone who uses it."

## Aloes

One can describe Umzimvubu as a home of mountains and aloes, you can't miss the natural beauty of aloes all over the area, with their usually spiny leaves arranged in neat rosettes, and tall candle-like inflorescences in predominantly red and vibrant orange hues, they brighten up the dull winter landscape. The vast majority of aloes flower in winter, while some groups, like the grass aloes for instance, usually flower in spring or summer and this make touring in Umzimvubu not to be seasonal.



# Information

## Transportation

### Air Transport

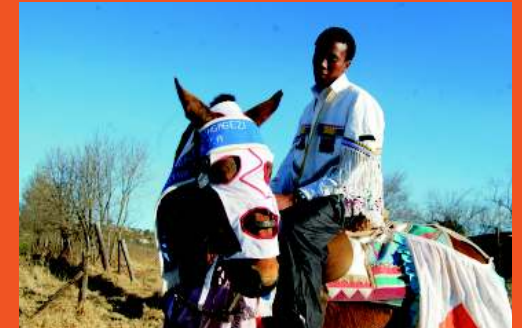
There are two airports that are within close proximity to ULM; one is the East London Airport which is about 320km's from Mount Frere and the other one is the Mthatha Airport which is approximately 120 km's from Mount Frere. Alternatively visitors can also disembark from the Durban Airport.

### Road Transport (R61)

Once a visitor has landed at these airports there are a number of car hire companies that they can use to hire a car and drive to ULM. There are also coaches, busses, taxis, shuttle services and tour that could be used to transport visitors from the airports.

## Climate and Weather

Mount Frere normally receives about 671mm and Mount Ayliff 672 of rain per year, with most rainfall occurring mainly during mid summer. It receives the lowest rainfall (7mm) in June and the highest (110mm) in January. The monthly distribution of average daily maximum temperatures shows that the average midday temperatures for Mount Frere range from 18.3°C in June to 25.9°C in January. The region is the coldest during July when the mercury drops to 3.7°C on average during the night. Arts & Culture Arts & culture has been identified as one of the major contributors especially for tourism purposes in the Eastern Cape, the ULM area is no different, crafts have emerged as more than just a form of capturing history and telling stories, families and villages are getting tremendous economic benefits from the skill of craft manufacturing. From local arts and crafts such as beadwork, weaving, sewing and pottery to traditional dancing, cuisine and , the Umzimvubu region is alive with cultural heritage. Enjoy and experience this hospitality and rich culture in style, make getting there an informed decision by taking a peep of the excellent Cultural Villages



## Local Craft

One of the many unique highlights in and around Umzimvubu Local Municipality is the abundance of crafters and traditional dancers. A beautiful craft pottery centre has been erected in the Mount Frere where visitors can pop in and purchase fantastic examples of local amaBhaca pottery. The local crafters operate out of modest local residences, but upon visiting one is not disappointed with the quality of traditional clothing and decorations on offer. The unique bright colours and intricate beadwork make many of the items on hand the perfect gift for those at home not lucky enough to be with you on your visit to the region.



# Upcoming Projects

## Goxe Cut Flower

Goxe Cut flower that was producing huge amount of cut flower but the flowers were seasonal hence the project plant maize and vegetables, there is an estimated R13 million that will go in the further development of this project among which a B & B, hiking trail, up-market chalets and a conference centre will be build. Peach project to plant and manufacture peaches at Phakade is on the way, Aloe at Betshwana Mount Ayliff and Pole Treatment at eMawusheni Mount Frere.



Contact Person: Ms Shirley Batyi  
Tel: 039 255 8506  
Cell: 082 747 0435

## Commercial Nursery



Fresh Produce  
Trading Facility  
Phuthi Hawker Stalls  
Milling plant & silos



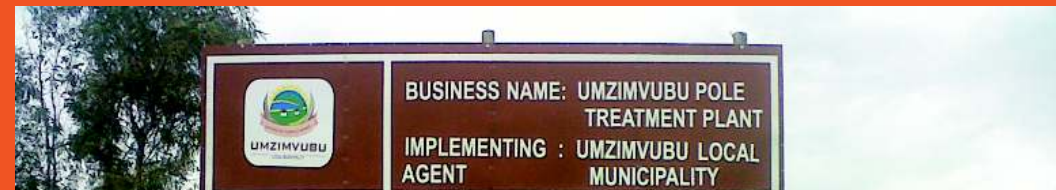
## Mount Frere Public Library



Address: Mount Frere  
Contact Person: Shirley Batyi  
Tel: 039 255 8506  
Cell: 082 747 0435



Peach Value  
Aloe Value Addition  
Pole Treatment



# King Madzikane Memorial

**Madzikane born in 1749** was the founder and a King of the Bhaca people. One of his grandfather was Sihelem ,in 1811 Madzikane united many multitudes of different people and tribes to form amaBhaca consisting of many tribes including amaZulu, amaWushe, amaNqolo, amaNzelu, amaZizi, amaNjilo, abaseNhlwangini, amaQwabe, abaThembu etc. Madzikane's father was Khalimesh. In 1819 he (Madzikane) was driven away further by AmaZulu warriors led by Inkosi Dingane. Madzikane crossed Umzimkhulu River and settled at Nunge Mountain near Kokstad and Mount Ayliff. In his great house Mdzikane had two sons Sonyangwe and Ncaphayi.



One of the reigning kings of amaBhaca tribe at Mount Frere Lubhacweni Administrative Area ward 17. Ingonyama, Isilo sama Bhaca Madzikane the 2nd.



**Address: N2, Mt Frere**  
**Contact Person: Shirley Batyi**  
**Tel: 039 255 8506**  
**Cell: 082 747 0435**



After the death of Madzikane KaZulu in 1836 this nation was splited into two groups, one led by inkosi Sonyangwe went back to KZN and one led by inkosi Ncaphayi remained in the Eastern Cape.

A memorial stone was erected in 1992 along the N2 road and officially opened by former President Nelson Mandela in honour of this warrior.

For further information and to visit this memorial site contact Umzimvubu Local Municipality on the details provided below.

**Address: N2, Mt Frere**  
**Contact Person: Shirley Batyi**  
**Tel: 039 255 8506**  
**Cell: 082 747 0435**



# Ntsizwa Monument

Situated right on top of Ntsizwa mountain.

During the winter of 1828 the campaign of Zulu forces took place and were attacked by joint forces of Baca and Xesibe in the area that is now called Ntsizwa. Nogula, a Xesibe army general and one of Sinama's sons, led the Xesibe division whereas Madzikane led the Baca division. Shaka personally led his strong regiment at Umzimkhulu River, he divided his regiment into two, one to Faku and the other to Madzikane and assigned two generals to lead while he and Fyn remained camping at Umzimkhulu River. The battle arena for Madzikane was Nunge Mountain Range. Madzikane instructed his son Ncapai who led his regiment comprising of Wushes, Chiyas, Mpovanes, Nqolos, Xesibes and other to first engage Shaka's regiment in a running battle around Nunge Mountains. While he was engaged in his usual muthi practices that led to a terrible snow fall. The Shaka's army suffered a severe cold and Madzikane instructed Ncapai to infight. Shaka's army was eventually defeated at Nunge Mountain Range, because in Ntsizwa Zomkhosi Shaka fell there, this part of the range became Ntsizwa Mountain.

Contact Person: Shirley Batyi

Tel: 039 255 8506

Cell: 082 747 0435







# Umzimvubu River



Umzimvubu, the name of Umzimvubu River is an isiXhosa name which means “home of the hippopotamus” Umzimvubu river is a South African river rising in the Drakensburg Mountains in the district of Mount Currie, south of the meeting-point of the Eastern Cape, KwaZulu Natal and Lesotho. It flows for 400km and ends in the Indian Ocean at Port St Johns between the so called Gates St John-cliff faces 365m. The catchment area is about 20 000km square and the river’s drainage is about three quarters that of the Tugela or Vaal River.

The most important tributaries are the Mzimhlava (Umzimhlava), which flows past Kokstad and Mount Ayliff, the Mzimvubu , which enters it from the north-east and the Keneka and the Tina, which join it from the north west, the latter shortly after its confluence with the Tsitsa. Although the mouth of the river sometimes sands up, the last ten kilometers of the river are navigable.



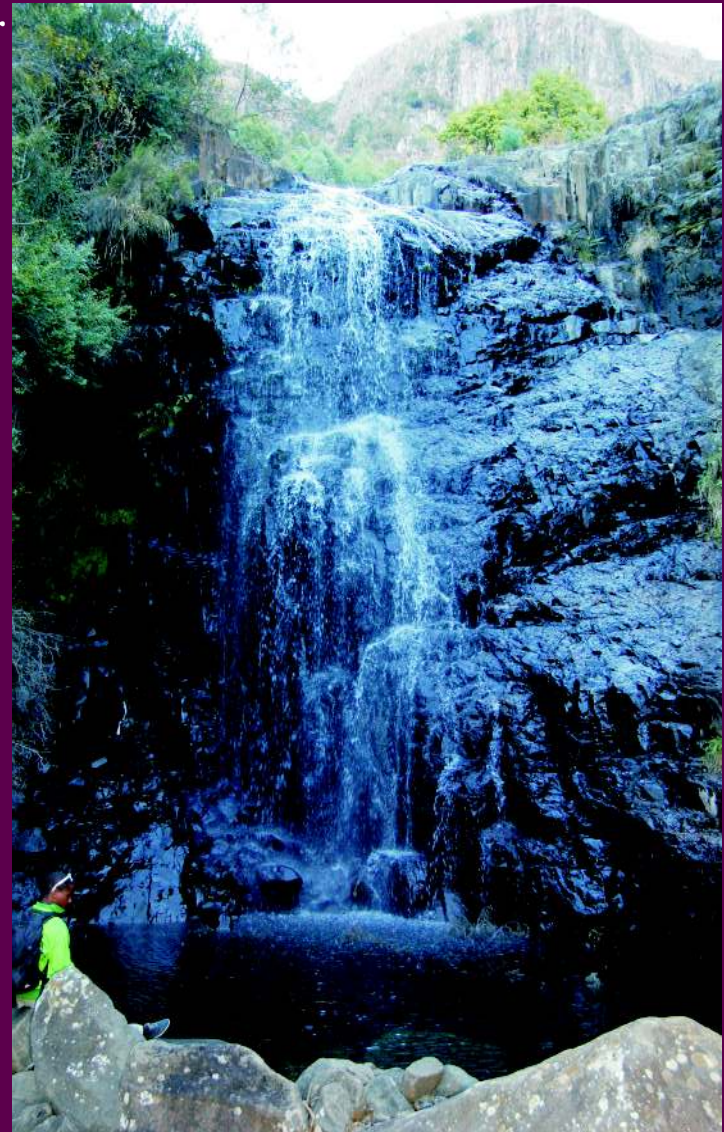




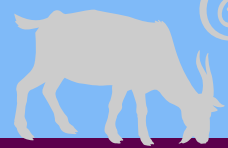
# Lugelweni Waterfalls

One of the amazing attractions in Ntsizwa Mountain is a spectacular natural wonder called Lugelweni Waterfalls situated in Lugelweni Village along the N2 between Mount Frere and Mount Ayliff with a beautiful forest and mountain as a back drop to this splendour. This area is also rich in coal deposits and you will spot various entrances into the mountain that were built by coal miners, some of which are still used by local villagers, among these entrances there is one that start at the top of the fall and goes to Sugarbush Village which is estimated at +/- 14km. For a visit to the falls and to arrange for a hike or a scenic mountain bike trail contact Umzimvubu Local Municipality on the details provided.

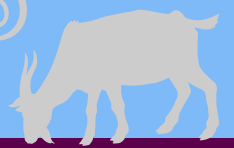
**Address:** Lugelweni A/A, Mt Ayliff  
**Contact Person:** Shirley Batyi  
**Tel:** 039 255 8506  
**Cell:** 082 747 0435







# Ntenetyana Dam



**Ntenetyana Dam is a wide and expansive dam surrounded by three villages (Mpola Village, Godola Village & Ntenetyana Village hence its name), for those visitors who wish to spend a quite morning fishing or relaxing in a small boat this is the ideal place to visit. For more information contact Umzimvubu Local Municipality for details concerning permits and other requirements.**

**Address: Mt Frere  
Contact Person: Shirley Batyi  
Tel: 039 255 8506  
Cell: 082 747 0435**





# Ntsizwa Mountain

Ntsizwa Mountain formally known as Nunge is one of the eye catching attractions that is worth visiting and explore for its strong heritage. It is where the recent monument was built in memory of the Ntsizwa ZikaShaka who most of them died because of the snow while fighting with King Madzikane ka Zulu, hence it was rename Ntsizwa Mountain. There are numerous hiking trails to explore through mysterious indigenous forests, towering waterfalls and there are mapped trails for the experienced biker with great challenges, as well as some gentle rides for the inexperienced. These trails take one through the forest, up on to the grassland escarpment or through the magnificent tree plantation.





# Ingeli Mountain

The mountains has hiking trail that take one through the village where you can experience true amaXesibe culture, meet with the rural folk who still live according to their traditions and share in their daily lives. The hikes vary from a gentle stroll to a daunting trail to climb at.

Ingeli Mountain is where in 1950 an aeroplane crashed in its peak killing all its occupants. Enjoy hunting in this mountain. Species found are wild birds, baboons and springboks





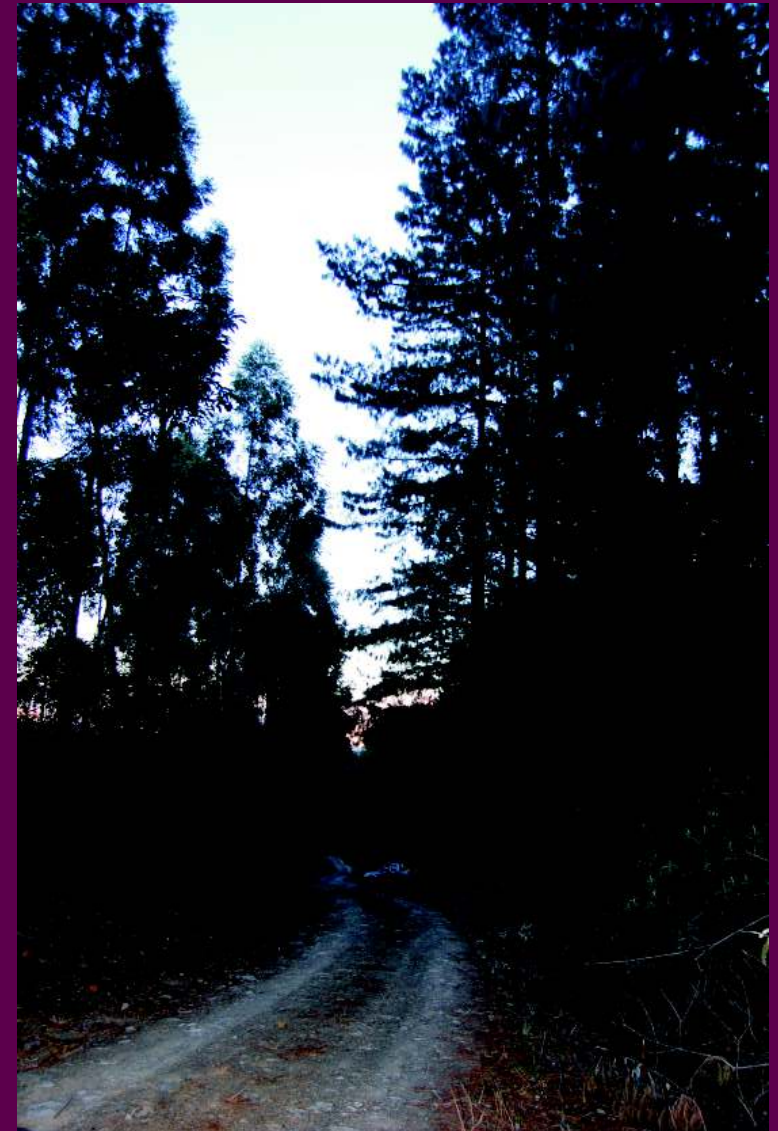


# Hiking

Nature lovers and hikers, this area is a fantastic multi-activity adventure trail in the municipality. Overall the impression is one of endless landscapes stretching as far as the eye can see, a solitude in which you can almost feel the peace and tranquillity and achieve total piece of mind. The design of the trails, the beautiful scenery and the sense of isolation combine to provide a great experience.

..... bring your family and friends. They can spend time in and around these trails while you cycle and enjoy.

Remember: You decide on how far or how hard you want to go!







# Noweka Mountain & Tina River

**Experience the beauty of nature in this mountains by going on a spectacular horse ride on Noweka Mountain at eMawusheni (Lwandlana)**

**What better way to see one of the most beautiful river in the area, Tina River that is in the boundry of Umzimvubu Municipality and uMhlontlo Municipality. Species that are found in this mountains are birds, springboks, snakes, rabbits, imbila etc**



**Address: Mt Frere  
Contact Person: Shirley Batyi  
Tel: 039 255 8506  
Cell: 082 747 0435**







# Culture

Arts & Culture has been identified as one of the major contributors especially for tourism purposes in the Eastern Cape, the ULM area is no different, crafts have emerged as more than just a form of capturing history and telling stories, families and villages are getting tremendous economic benefits from the skill of craft manufacturing. From local arts and crafts such as beadwork, weaving, sewing and pottery to traditional dancing and cuisine. The Umzimvubu region is alive with cultural heritage. Enjoy and experience this hospitality and rich



culture in style, make getting there an informed decision by taking a peep of the excellent Cultural Villages.



A visit to this region would not be complete without a live traditional dance viewing. This can be arranged via the municipality. These local groups are extremely passionate and their energy and rhythm has an almost hypnotic effect on a spectator. One is swept into the culture and lifestyle of the AmaBbaca, AmaXesibe & AmaHlubi, AbaSotho etc. From the beautiful attire and unique make-ups to the rhythmic instruments and dance- one could not get a more on this experience!





# Food

**In terms of the culture, there are stronger and more distinct cultural ties an integration of cultures in the area. This can be seen in the food consumed, where maize and maize products form the staple diet with the famous dishes such as uMngqusho (Samp and Beans) and umvubo (sour milk) Visit one of the cultural villages for a tasty cultural meal**





# Religion

The majority of people in Mount Ayliff and Mount Frere are of Christian religion and there are minute population Islamic and Buddhists religions. The most prominent churches are the Methodist church and the Assemblies of God. Most of the people who live in these areas are black people, there is a small percentage of the White, Indians and foreign populations in Mount Frere.

## Methodist Church Mount Frere



The church is situated on the N2.  
Address: Main Road, Mt Frere  
Manager: Shirley Batyi  
Tel: 039 255 8506

## Emmanuel Western Church



Pilgrim Mission-Mount Frere  
Address: Main Road, Mt Frere  
Cell: 083 744 5763 / 073 541 7609  
Tel: 039 255 1505

## Saint Ninians Church



Address: Mount Frere  
Contact Person :Rev S.M Mgqibisa /  
Rev. Owen Ludidi  
Cell: 072 604 6684 / 082 422 8741

## St Oswald Parish



Address: Mount Ayliff  
Contact Person :Rev. Michael Dumisa  
Motsa  
Cell: 076 508 2658

## St Geoges Parish Church



Address: Mount Frere  
Contact Person :Rev S.M Mgqibisa /  
Rev. Owen Ludidi  
Cell: 072 604 6684 / 082 422 8741





# AmaBhaca Craft & Centre

AmaBhaca Craft Centre is situated just outside Mount Frere next to the newly built Madzikane kaZulu Memorial Hospital. The centre is the home to crafters who produce various products. This centre has distinguished itself for its pottery, bead work, grass products and the quality standard of the produce is of a high level. The products on offer tell stories of the local people, therefore if you buy products from AmaBhaca Craft Centre you take a piece of AmaBhaca culture with you. Some of the services in this centre is an elegant B & B, Restaurant, Conference Centre and also serve as a Tourist Information Centre for ULM.



**Address :** Lubhacweni A/A Next to Madzikane Memorial Hospital (N2)

**Contact Person:** Ms Nomvuyo Makaula

**Tel:** 072 421 8336







# Msukeni Community Centre

**Msukeni Community Centre is predominantly a craft centre situated along the N2 midway between Mount Ayliff and Kokstad. The centre boasts a variety of crafters specialising in beadwork, traditional and various other products. Msukeni Community Centre also has a fully equipped conference centre with it's own kitchen and break away rooms. The conference is also used for weddings and other similar functions. Catering is also provided on request by local entrepreneurs**

**Address : Gugwini A/A - Msukeni, Mount Ayliff  
Contact Person: Mantuli Mfenqe / Mr Ndiki  
Tel: 084 291 4515 / 073 561 1631**







# Xesibe Tourism Centre

From local arts and crafts such as beadwork, weaving, sewing and pottery to traditional dancing, the Xesibe Tourism Centre is also one of the Tourist Information Centre in the area, alive with cultural heritage. To experience this, visit this Cultural Village and Information Centre in the N2 Road between Kokstad and Mount Ayliff.

**Address :** Along the N2 Road  
**Contact Person:** Ms Nosisa Mdutyana  
**Cell:** 084 647 9058/ 073 483 6450 or  
**Contact Umzimvubu Local Municipality**  
**Contact Person:** Shirley Batyi  
**Tel:** 039 255 8506  
**Cell:** 082 747 0435







# Sixvillage Community Centre

**Specialising in Crafting, Pottery, Sewing & Grass Weaving**

**Address: Phakade Junction, Cabazana Location-Mount Ayliff**

**Contact Person: Ms Phumla Mbangi**

**Cell: 083 994 7717**





# Afrizona Guest House



The establishment has 7 ensuite twin bedrooms, 7 double bed ensuite rooms and 3 very spacious ensuite rondavel chalets. There is ample secure parking space and 300 seater conference room. Tuck into our scrumptious meals with decadent desserts or enjoy a lazy braai with executive salads to tantalise your tastebuds. Full cooked breakfast is served daily from 7:00 am - 9:00 am in our communal dining room. Dinner is available on request. Complimentary coffee and tea in all bedrooms. Laundry is available on request.



**Address : 1 Hope Street, Mt Frere**  
**Manager : Nangamso Zihle**  
**Tel: 039 255 0060/ 039 255 0773**  
**Fax: 039 255 0209**  
**Cell: 083 747 0383 / 083 764 2636**





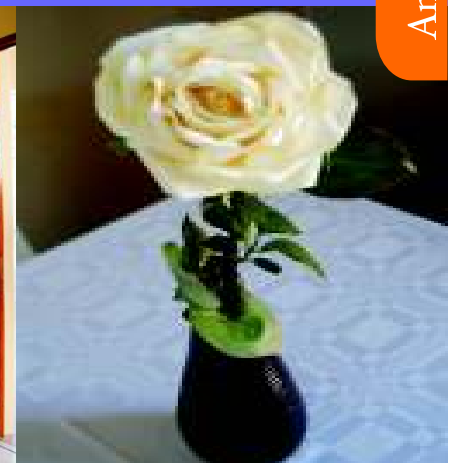
# Amafana Guest House



- Six rooms with ensuite bathrooms each.
- Parking facilities for light vehicles.
- Braai area
- Conference facilities
- Refrigerator and microwave is available in every room
- Television with DSTV is available in each room



**Address: 73 Neapai Street, Mount Frere**  
**Manager: Sabelo Ndikinda**  
**Fax: 086 656 8854**  
**Cell: 083 687 0761**  
**Email: [ndicks@webmail.co.za](mailto:ndicks@webmail.co.za)**



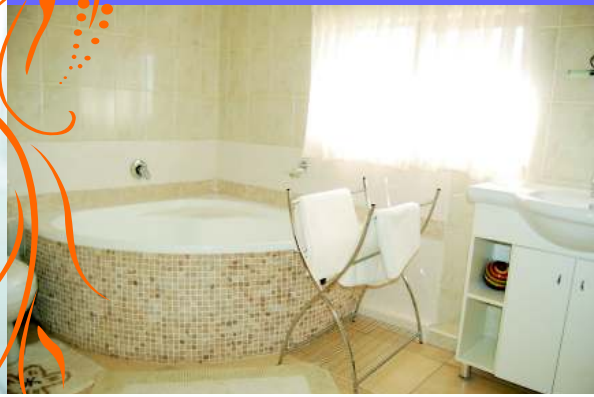
# BCN Makaula Hotel



We offer fully equipped conference facilities to a maximum of 80 delegates, catering services available based on your special requirements. There are 24 rooms with 3 family rooms Set in the heart of kwaBhaca among green hills and indigenous forests. Guests can unwind and relax in a peaceful and secure environment.



**Address: 194 Sophia Road, Mount Frere**  
**Manager: Ntombi**  
**Tel: 039 255 1081**  
**Fax: 039 2551082**  
**Cell: 082 570 5279**  
**Email: [bcnmakaula@gmail.com](mailto:bcnmakaula@gmail.com)**





# Denipel Lodge



We are excellently located on the backdrop of the mountain, just only minutes from the town along N2. We are a three-star B&B offering guests a unique blend of graceful hospitality in idyllic surrounds. Each spacious room has been individually designed and adorned with soft furnishings in rich warm colours and luxuriant bathtubs and / showers.

What really sets us apart is the commitment and passion with which we practice the art of inn-keeping, our commitment to the well-being of each guest, and our efforts to provide a B&B with a genuine sense of heart and soul.



**Address: 388 Sport Street, Mt Ayliff**

**Manager: N P Giwu**

**Tel: 039 254 0300 / 301 / 302**

**Fax: 039 254 0305**

**Cell: 082 306 7240 / 082 801 8592 / 082 300 3805**

**Email: [npgiwu@yahoo.com](mailto:npgiwu@yahoo.com)**



# Endulini Guest House



Step into the Endulini Guest-house and you step into a bygone era of friendly charm and hospitality. The guest house provides a romantic, secluded haven for couples and a rejuvenating, comfortable retreat for friends. You'll find a firm commitment to refreshment reflected in our upscale bed and breakfast amenities. We strive to make your stay with us as enjoyable. Guests return time and time again to the Edulini Guest-house due to the warm South African hospitality, friendly staff and great locality.



**Address: No. 29 Sonyonga Street-Mount Frere**  
**Manager: Belinda Steady**  
**Tel: 039 255 1972**  
**Cell: 082 557 2180**  
**Email: [belinda@enduliniguesthouse.co.za](mailto:belinda@enduliniguesthouse.co.za)**  
**[www.enduliniguesthouse.co.za](http://www.enduliniguesthouse.co.za)**



*We are here to indulge you!*





# Eyethu Bed & Breakfast



Follow the garden patch to our B & B, situated in the middle of town, with walking distance to town.  
We offer 6 double rooms all overlooking a mountain backdrop in the distance. DSTV is available in all rooms



**Address: 2 Nolangeni Street, Mt Ayliff**  
**Manager: Ziyanda Bomela**  
**Cell: 073 454 7141 / 083 703 9403**



# Ilita Guest House



Ilita Guest House is situated in Mount Frere.  
We have 19 rooms, 17 all ensuite.  
We also offer DSTV, a common lounge with a fire place,  
a conference room that can accommodate 20-25 people.  
We pride ourselves on excellent service.

**Address:** 11th Avenue, 2nd Short Street, Mount Frere  
**Manager:** Zolile & Tibisi Tom  
**Tel:** 039 255 0105  
**Fax:** 086 665 4925  
**Cell:** 082 749 5609  
**Email:** [ilita@workmail.co.za](mailto:ilita@workmail.co.za)





# Indwe Bed & Breakfast

At our B & B you have a choice of 20 bedrooms. We have a reputation for attracting our visitors back due to the standard of our service and the homely atmosphere at Indwe. Bookings should be done in advance as we are a popular establishment for out of town visitors.

For your convenience and privacy all rooms are ensuite, conference facility for 30 guests.

**Address: 486 Neapai Street, Mt Frere**  
**Manager: Mrs Hlakanyana**  
**Tel: 039 255 1660**  
**Fax: 039 2551660**  
**Cell: 083 747 5839**



# N2 Imvelo Guest House



This awe inspiring guest house in the rural areas is along N2 road has 7 comfortable rooms all bedrooms have double beds

All the rooms have ensuite bathrooms with showers and bath facilities. There is plenty of storage and hanging space as well as room for reading and relaxing. In each room, tea and coffee making facilities

are provided along with the television; when the weather turns cool, there are fan heaters in each room to warm up the atmosphere. Lunch and dinner is available on request (Vegetarian meals are also catered for.)



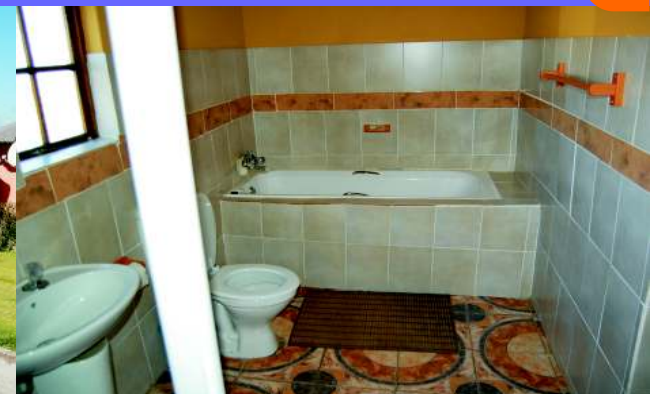
**Address: Mjila Location, Mt Frere**

**Manager: Mike Mzobotshe**

**Office Booking: 071 699 4905**

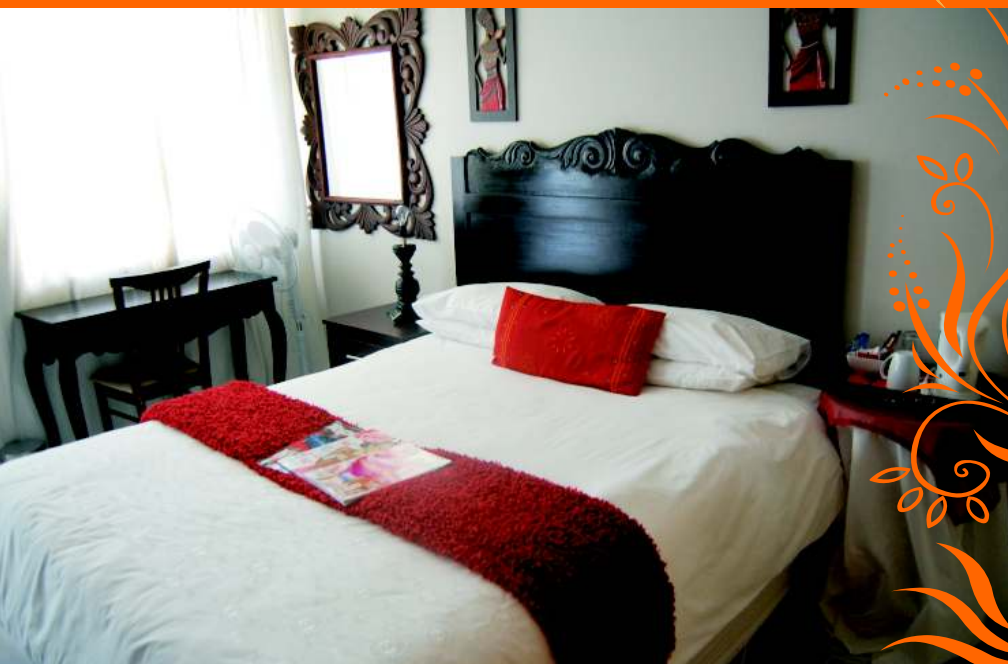
**Fax: 039 255 0240**

**Cell: 083 754 6325**





# Lisomma Lodge



A luxurious lodge in the heart of AmaXesibe-Mt Ayliff, we offer relaxation, elegance, tranquility, and privacy. It is our commitment to compliment our establishment with friendly and efficient service. The nine en-suite bedrooms are decorated in a morden style with DSTV. Join us for a good night and full English Breakfast. Don't miss out on our beautiful views of Ntsizwa and Smakamaka mountains, with a beautiful blanket of snow in winter, and whispering waterfalls in summer.



**Address:** 294 Mageushe Street, Mt Ayliff  
**Manager:** Nozuko Qulu  
**Tel:** 039 254 0647  
**Fax:** 039 254 0006  
**Cell:** 083 239 0282  
**Email:** [nozukoqulu@webmail.co.za](mailto:nozukoqulu@webmail.co.za)



*"Ikhaya lam selakho, My home is your home"*

# Mount Ayliff Hotel



Enjoy bed and breakfast accommodation in one of Mt Ayliff finest old houses. We have 7 double rooms two of which are twin bedded rooms and all rooms have ensuite bathrooms with showers. Comfy beds with crisp cotton bed linen ensure a good night's sleep. The beautiful garden is a peaceful haven after a busy day exploring all the delights the area has to offer. Mt Ayliff Hotel offers the best of both worlds, centrally and conveniently located for shops and restaurants, you have it all. We look forward to welcoming you to our hotel.

**Address: Erf 18 & 19 Ntsizwa Street**  
**Manager: Ms Nopasika Maziyana**  
**Tel: 039 254 0378**  
**Cell: 073 150 0557**





# Mount Frere Guest House



We offer 9 rooms all including en-suite bathrooms with DSTV.  
Deluxe Double-Bedrooms  
Twin-bedrooms  
Conference Hall

Our goal is to provide wonderful memories...ones that you'll re-call fondly year after year. Quality, creativity and pricing options along with excellent service means that we are completely committed to your satisfaction.



**Address:** 100 Mngcisan Road, Mt Frere  
**Manager:** Ms Thandeka Nondabula  
**Tel:** 039 255 1880  
**Fax:** 039 255 1880  
**Cell:** 078 351 9054  
**Email:** mtfrereguesthouse@gmail.com



# 2nd World Bed & Breakfast



We are ideally situated within easy access of the Mt Frere CBD. Our beautifully tiled en-suite bathrooms are equipped with glass door showers. All rooms have DSTV, tea/coffee making facilities and built-in wardrobes.

Our rooms offer the best privacy in town, each room has its own entrance. Children are welcome in this spacious and comfortable home. You are guaranteed to experience the peaceful atmosphere which is enchanted by our fine reputation for hospitality and exceptional cuisine.



**Address:** 2461 Madzikane Road, Mt Frere

**Director:** Nomvelo Mdzinwa

**Tel:** 039 255 0055

**Cell:** 072 900 9699

**Email:** [nmdzinwa@gmail.com](mailto:nmdzinwa@gmail.com)



*"no better care"*



# Tapi River Lodge



It is not just a service that we offer, but also a piece of our life. Tapi river lodge features 14 rooms, all suites, including the bathrooms, are tastefully decorated with contemporary furnishings. The executive rooms are in a great spot to kick back with a cocktail and take in the Umzimvubu River view. We serve breakfast, lunch and dinner. The lodge also provides business catering and conference facilities.

T.R.L makes every event a special occasion, rest assured that every detail is crafted to make your unique experience unforgettable. Our lodge makes the perfect wedding/conference venue.

**Address: N2 Umzimvubu Bridge**

**Manager: Jane Myendeki**

**Tel : 039 255 7004**

**Cell: 071 596 4387**

**Fax: 086 610 0595**

**Email: [tapiriverlodge@gmail.com](mailto:tapiriverlodge@gmail.com)**

**[www.tapiriverlodge.webs.com](http://www.tapiriverlodge.webs.com)**





# Tatenda Bed & Breakfast



This elegant guesthouse is situated along the N2 highway in the town of Mount Frere overlooking the town's craft centre, Madzikane ka Zulu's grave (the Bhaca nation's founder) and the ultra-modern Madzikane ka Zulu Memorial Hospital. Tatenda is a word taken from the Shona language meaning "Thank you" and it is in this spirit that lodging initiative was born. We wanted a way to plough back to the community and show the spirit of Africa to the rest of the world. AA rated.

**Address: Opposite Madzikane Memorial Hospital**

**Manager: Lizo Cekeshe**

**Tel: 039 255 1821**

**Fax: 086 502 9762**

**Cell: 083 537 9387**

**Email: [info@tatendagh.co.za](mailto:info@tatendagh.co.za)**

**[www.tatendagh.co.za](http://www.tatendagh.co.za)**





# Police Stations

## SAPS Mount Ayliff



Address : Mount Ayliff  
Tel: 039 254 0007

## SAPS Mount Frere



Address : Main Street, Mount Frere  
Tel: 039 255 0550





# EMS & Fire Rescue Station

Emergency Service



Address : 186 Ntsizwa Street, Mount Ayliff  
Tel: 039 254 0134



Fire & Rescue Station



Address : Nolangeni Street, Mount Ayliff  
Tel: 039 254 0748





# Hospitals

## Mount Ayliff Hospital



**Address : No. 8 Ntsizwa Street, Mount Ayliff**  
**Tel: 039 254 0230/7**  
**Fax:039 254 0190**



## Madzikane KaZulu Memorial Hospital



**Address : N2, Mount Frere**  
**Tel: 039 255 8200**



# Surgery

## Dr Carrim & Dr Odufu Medical Centre



**Address :Shop No.6,  
Mount Frere  
Tel: 039 255 0379  
Cell: 072 116 9742:**





# Pharmacies

## Alfred Nzo Good Health Pharmacy



Address : Main street, Mt Frere  
Tel: 039 255 1937  
Fax:039 255 1941

## Alpha Pharm Pharmacy



Address : Main street, Mt Frere  
Tel: 039 255 1467

## Ikhemsti Yamayeza Esixhosa Nawesilungu



Address : Erf 21 Ntsizwa Street Mount Ayliff  
Contact Person: B.L Sokhanyile  
Cell: 072 754 9066



# Fitness & Recreation Centres

## All You Want Gym



**Address:** Main Street Mount Frere  
**Contact Person:** Simbongile  
**Cell:** 078 830 3331



## Ntsizwa Community Park



**Address:** Mount Ayliff  
**Contact Person:** Shirley Batyi  
**Tel:** 039 255 8506  
**Cell:** 082 747 0435





# Filling Stations

**Engen 1 Stop**



**Steers**

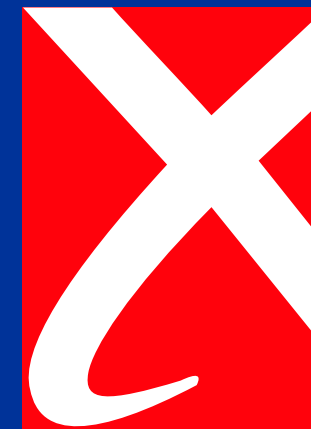


**Excel Garage**



**Address: Main Street, Mt Frere**  
**Tel: 039 255 0240/082 856 3957 (Mrs Mpiti)**

**Address: Nolangeni Street, Mt Ayliff**  
**Open: 24/7**  
**Tel: 039 254 0615 (Thokozani / Pumza)**



# Community Radio & Post Office

## Alfred Nzo Community Radio



Address : Mount Ayliff  
Tel: 039 254 0427



## Post Office



Address : Ntsizwa Street Mount Ayliff  
Tel: 039 254 0021





# Liquor Stores

## Mount Ayliff Bulk Sales & Bar



Address: Erf 18 & 19 Ntsizwa Street  
Manager: Ms Nopasika Maziyana  
Tel: 039 254 0378  
Cell: 073 150 0557

## SSS Liquor Store



Address : Main Street, Mount Frere  
Tel: 083 582 7157 (Zukiswa)





# Supermarkets

## Rolyats Spar Mount Ayliff



Address: Lot 4 Ntsizwa Road- Mt Ayliff  
Tel: 039 254 8700 (Angelinah Gebezela)



## Boxer Store



Address: 25 Ntsizwa Road  
Mt Ayliff  
Tel: 039 254 0841  
(Nozie Kanise)  
Fax: 039 254 0838



## Solis Spar



Address: Main Street, Mt Frere  
Tel: 039 255 0217





# Restaurants

## KFC



**Address: 227 Main Street, Mt Frere**  
**Tel: 039 255 0203 (Ndileka)**



## Captain Dorego's



**Address: 408 Bodlala Street- Mt Frere**  
**Tel: 039 255 1910 (Ndileka)**  
**[www.dorego's.co.za](http://www.dorego's.co.za)**



# Hair & Nail Salons

## Hair Point Nail & Beauty Salon

Situated right in the CBD of Mount Frere, the Hair Point Nail & Beauty Salon is a one-stop shop for all your pampering needs. Offering a wide range of hair and beauty treatments from a quick wash and blow dry to a professional manicure and pedicure. Our expert staff are always on hand to offer advice and support throughout your treatments. As well as offering professional treatments, we also sell hair and beauty products from leading brands such as brazilian hair weave, and many more.

**Address:** Shop No.1 Exclusive Lodge  
**Contact Person:** Remmy  
**Cell:** 071 010 3191



## T & A Hair Salon

Manicure, pedicure, massage,  
hairdressing, hair products



**Address:** Madzikane Street-Mount Frere  
**Contact Person:** Thobile  
**Cell:** 039 255 1915





# Banks

## ABSA Bank



Address: Main Street,  
Mt Frere  
Tel: 039 255 7600

## Capitec Bank



Address: Shop 3 Main Street, Mt Frere  
Tel: 039 255 1384

## Nedbank



Address : Shoprite Mall, Mount Frere  
Tel: 039 255 7360



## Standard Bank



Address: 176 Main Street, Mt Frere  
Tel: 039 255 0222



# Banks

## African Bank



**Address: Old Mutual Building  
Shop No.1, Mt Frere  
Tel: 039 255 1514 / 039 255 1543**



## First National Bank



**Address: Main Street No.79, Mt Frere  
Tel: 039 255 7360**





# Fashion & Designs

## Do it Again Academy



**Address : CBD, Mt Frere**  
**Contact Person: Thandiswa Jojozi**  
**Tel: 073 256 3270 / 079 901 4194**

Do it Again Academy is situated in the central business district, the enterprise specializes in traditional wear, and local craft such as beadwork, local fashion and accessories, decorations and art. Blended with local fashion .



# Fashion & Designs

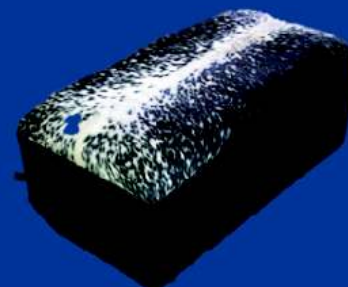
## Zvifunge Designs

*(Imagine yourself)*

We are situated in Mount Frere a small town in Umzimvubu Local Municipality, our products are also exhibited at Expo E.L, National Art Festival in Grahamstown and Decorex in Joburg. We design and manufacture leather products. For accessories we do all kinds of bags, shoes, belts, wallets, covers for (diaries, cellphones & iPads), earrings, bangles and corporate gifts. For home we design and create ottoman, coffee tables, magazine stands & photo frames.



**Contact Person: Yoliswa Sodwele**  
**Cell: 071 179 4875**  
**Fax: 086 668 0971**  
**Email: [ysodwele@zvifungedesigns.com](mailto:ysodwele@zvifungedesigns.com)**  
**[info@zvifungedesigns.com](mailto:info@zvifungedesigns.com)**  
**[www.zvifungedesigns.com](http://www.zvifungedesigns.com)**





# Cab & Hacking

## Take Home Taxi



Take Home taxis are found outside the Shoprite Mall, from the Qumbu end of town, and carry passengers to any destination in the central part of Mt Frere. Take the stress out of your shopping with us.

**Address : Main street, Mt Frere**  
**Contact Person: Sanele**  
**Tel: 076 299 2310**



## Horseback Riding



No matter if you are a galloping professional or an apprehensive beginner, horse riding in Umzimvubu is an incredible experience. Exploring the variety of culture and mystic mountains on horseback is an entirely unique experience. Discover the diverse wildlife, birdlife and many picturesque Umzimvubu treasures whilst horse riding. Let the horse do the work whilst you relax, breathe in the fresh air and admire the beautiful sights around you. A donkey ride gives you a real taste of the area, as you ride through the quaint villages.



**Address : CBD, Mt Frere**  
**Contact Person: Mr S.M. Sogoni**  
**Tel: 076 527 7102**



**UMZIMVUBU**  
LOCAL MUNICIPALITY

# UMZIMVUBU LOCAL MUNICIPALITY INFO



## Mount Frere

813 Main Street  
Mount Frere  
Private Bag X 9020  
Mount Frere 5090  
Contact Person: Shirley Batyi  
Cell: 082 747 0435  
Tel: +27(0)39 255 8500/0166  
Fax: +27(0)39 255 0167



## Mount Ayliff

67 Church Street  
Mount Ayliff 4735  
Tel: +27(0)39 254 6000  
Fax: +27(0)39 254 0167  
Anti Fraud - 0800 012 322  
Corruption Line  
Presidential Hotline-17737

[www.umzimvubu.gov.za](http://www.umzimvubu.gov.za)